

THE ESSENTIAL BOATING COMPANION

2020

THE CRUISING GUIDES PORTS

NEW AERIAL PHOTOS • COMPLETELY UPDATED EDITORIAL • MARINAS & FACILITIES •

**GEORGIAN BAY
THE NORTH CHANNEL
LAKE HURON**
INCLUDING THE
THIRTY THOUSAND
ISLANDS

ISLANDS & ANCHORAGES • SERVICES • RESTAURANTS AND MORE • PORTSBOOKS.COM

\$64.95

CANADIAN
Yachting
MEDIA

ISBN 9781777031817



9 781777 031817

MARINE ASSISTANCE & TOWING



Established in 1984

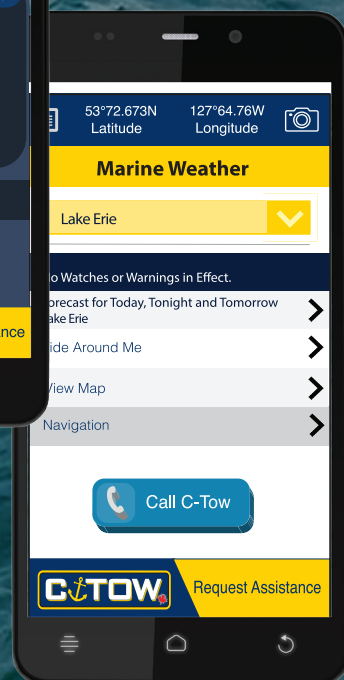
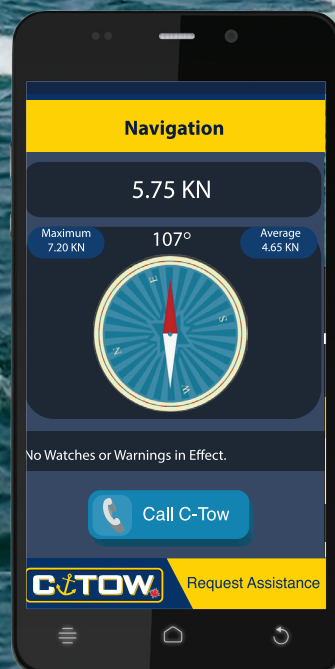




PEACE OF MIND BOATING

#00-000 C-TOW MEMBER
EXPIRY 12/15/15

1-888-419-CTOW



Current Marine Weather, GPS
Marinas, Compass, Speed, One Button
Call for Assistance and more.

FREE
C-TOW
MARINE APP



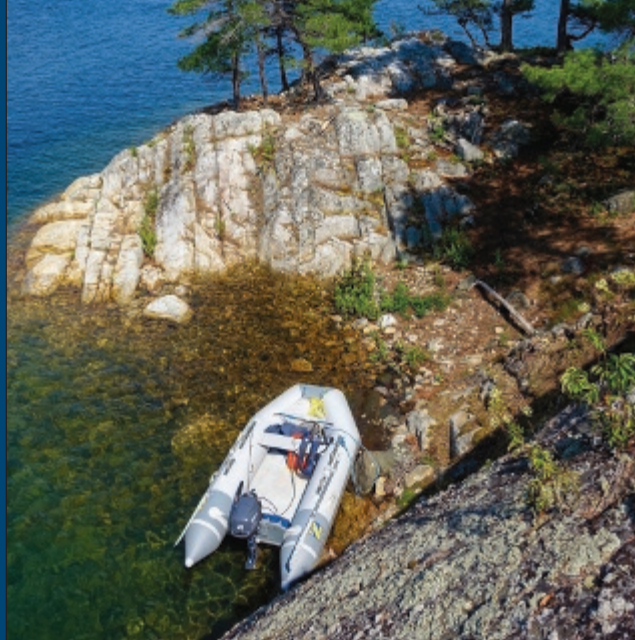
www.c-tow.ca
1-888-419-CTOW
1-888-419-2869 | 24 HOURS

Call or visit our website for details and our service areas



THE CRUISING GUIDES PORTS

2020



PORTS OF GEORGIAN BAY

Tobermory	79
Anchorage North and East of Tobermory	85
Lion's Head	88
Around Cape Croker: Anchorage and public docks from Melville Sound to Colpoys Bay	90
Warton	92
Owen Sound	95
Meaford	99
Thornbury	102
Collingwood	105
Penetanguishene	109

PORTS OF LAKE HURON

Sarnia	41	Kincardine	69
Port Huron	48	Port Elgin	72
Port Franks	53	Chart 2292	75
Grand Bend	56	Including Southampton, Chantry Island, Sauble Beach and Stokes Bay	
Bayfield	60		
Goderich	65		

PORTS ON THE NORTH CHANNEL

Killarney	177	Meldrum Bay	206
Manitowaning	184	Thessalon	208
Little Current	186	Bruce Mines	211
Kagawong	194	Drummond	214
Gore Bay	196	DeTour Village	218
Spanish	199	Sault Ste. Marie, Ontario	221
Blind River	203	Sault Ste. Marie, Michigan	227

PORTS OF MIDLAND & NORTH

Midland and Tiffin Basin ...	120
Victoria Harbour and Port McNicoll	129
Waubushene	139
Port Severn	136
Honey Harbour	144
Sans Souci	153
Parry Sound	155
Snug Harbour and Dillon Cove	166
Pointe au Baril Station	168
Byng Inlet and Britt	172

Setting Out with PORTS

Plus, how PORTS works with your charts to make cruising easier

Crossing the Border

What you need for a smooth entry

About Water Levels

Up? Down? How little? How much? Only one thing can be said with certainty: Water levels are going to change

Using the Charts

...plus how to use them with PORTS

Depth Perceptions

A conversion chart: From metres to feet and back

Going the Distance

A comprehensive mileage guide for Lake Huron, Georgian Bay, the North Channel and the Thirty Thousand Islands

Securing

Anchoring out, rafting up, mooring and manoeuvring

Pre-Cruise Checklist

Gunkholing Secrets

Ace gunkholer Gabrielle Lotimer leads you off the beaten path

Escape Routes

Long hauls, laydays and lovely anchorages: A detailed planner for cruises 3 days to 3 weeks long

THIRTY THOUSAND ISLANDS CRUISE GUIDE

INTRODUCTION

CHART 2202: PORT SEVERN TO PARRY SOUND

CHART 2203: PARRY SOUND TO BYNG INLET

CHART 2204: BYNG INLET TO KILLARNEY

NORTH CHANNEL CRUISE GUIDE

INTRODUCTION

PART 1: KILLARNEY TO LITTLE CURRENT

PART 2: BAIE FINE & THE NORTHEASTERN CORNER

OF THE NORTH CHANNEL

PART 3: LITTLE CURRENT TO THE BENJAMIN

ISLANDS GROUP

PART 4: THE BENJAMIN ISLANDS GROUP

PART 5: WEST OF THE BENJAMINS

The photographs and maps in this book are for identification purposes only and are not to be used for navigation. For navigation, use current Canadian Hydrographic Service and NOAA charts and related publications.

Port Severn is the northern terminus of the 240-mile-long Trent-Severn Waterway, the series of lakes, rivers and canals that links Georgian Bay to Lake Ontario.

identify it by its red-roofed lighthouse, Canadian flag and sign and visitors are asked to telephone or call on VHF 68 for docking reservations and instructions. The resort welcomes "loopers" traveling between it and its sister marina at South Bay Cove. Golfing is available nearby, and the resort offers a complementary light continental breakfast for visiting boaters, and an arrival gift.

Mobile engine repair for all types of engines, gas and diesel, is offered as is electrical repair. Emergency service is available on weekdays.

It is a short walk into town and the resort has a dining room, Rawley's Grill and Wine Bar (see "Eating Out") for which there is dockage available or a golf cart shuttle will pick you up from the lock. Rawley's offers nightly entertainment in the dining room / lounge, while the on-site Radiant Reflections Spa offers an opportunity to be pampered in style.

Facilities: 30 and 50-amp power, water at the slips; washrooms, showers, ice, heated salt-water swimming pool, picnic tables, beach, public telephone, fax service, Internet access (in the building), shuttle to town and newspaper delivery to boat.

Starport Severn (705-538-2975; starportmarina.com) is about 0.4 kilometre (1/4-mile) upstream from Lock 45 on the east shore at the marina symbol. Starport also owns Starport Simcoe on Lake Simcoe, this large "resort" facility can be identified by the Starport sign, and the red awnings on the building. Guests are asked to radio ahead on VHF 68 or go to the fuel dock for directions to a guest slip. There is a water depth of 12 feet in the entrance channel, 6 feet at the gas dock and 4 to 18 feet in the overnight slips. The marina has space for 100 powerboats, including about 8 transients, including newly expanded slips for vessels up to 60 feet. Boats with a maximum draft of 12 feet can be accommodated on floating or fixed docks.

Haulout of up to 25 tonnes using a Travel lift is available, as is heated indoor and outdoor winter storage for powerboats up to 60 feet. Starport does wood and fibreglass hull repair, sterndrive and inboard engine repair as well as propeller, canvas and electrical repair.

The large marina store sells marine hardware, cleaning supplies and safety equipment, wide assortment of clothing, gifts and groceries. Well known for the top chandlery store on the Trent. The liquor store and another grocery store are about a 5-minute walk away. The marina also has a luxury five-star boater's lounge, with washrooms, showers, laundry and kitchen.

Facilities: gas, diesel, pumpout, water and 30-amp power at each slip, 50-amp at selected slips, washrooms, showers, ice, Wi-Fi, pro-

pane exchange, picnic tables, children's play area with swings, firepit, boaters' lounge with barbeque deck, laundry, TV, fireplace, kitchen facilities.

Once past Starport Severn, you'll be able to take the privately buoyed channel from Uncle Henry Island to Driftwood Cove Marine Resort, on the west side of the small-craft route. You'll need chart 2029 for this.

Driftwood Cove Marine Resort (705-538-2502; driftwoodcove.com) is located across from Yellowhead Island at the end of the privately buoyed channel. A sign on the small-craft route and private markers point the way. The marina can be identified by its Canadian, American and Driftwood Cove flags. The entrance channel has 7 feet of water, with 5 to 7 feet at the overnight slips. Visitors are asked to call ahead on VHF 68 for directions and assistance. Driftwood Cove has 95 seasonal slips, with room for 10 transients on its 30 to 55-foot-long fixed and floating docks that are about 2 1/2 feet above water level. Maximum length is 55 feet; maximum draft,

**PLAN YOUR STAY
ON THE BAY**

VISIT FAMILY OWNED & OPERATED
KILLBEAR MARINA & HINDSON MARINA




Killbear Marina: 31 Pengally Road
Nobel, Ontario P0G 1G0
Hindson Marina: 79 Champlain Road
Penetanguishene, Ontario L9M 2G2

5 1/2 feet. Boats up to 43 feet can be hauled out; onsite winter storage, shrink wrap and a full range of mechanical services are offered. A small marine store carries nautical charts & supplies, sundries, gifts, clothing and live bait. A recreation building and fitness centre are available for DCYC members and transient guests.

For boaters who would like a break from the boat, Driftwood Cove has 9 fully furnished cottages that sleep up to 8 people. All are equipped with central air conditioning, fully equipped kitchens with cookware, dishes & utensils, towels / linens, satellite TV, wireless internet, and screened in porches. Amenities



16 SLIP MARINA | OUTDOOR PATIO | FINE DINING
OVERNIGHT & DAY DOCKING | FULL SERVICE SPA



Located at Lock 45 in Port Severn

705 538 2272 | www.rawleyresort.com | info@rawleyresort.com



Chart 2202, 2029: Driftwood Cove has a beach, gas barbecues and a café, and cottages for rent



Port Severn

Come chill with us:

44.7792° N

79.5119° W



include a sand beach, beach volleyball, basketball, shuffleboard, horseshoes, canoes, paddleboats, and a children's playground. It's a short walk from Driftwood Cove into Port Severn. **The Driftwood Galley** offers casual waterfront dining with docks available for boaters who want to come just for a meal. The Galley is open every day during the summer for breakfast, lunch & dinner.

Facilities: Pump out; 30 and 50-amp power, fresh water and satellite TV hook-up at each slip; 2 buildings with washrooms & showers, ice, coin laundry, wireless Internet, picnic tables, gas barbecues, launch ramp, tent pitching area, dog walk park.

MARINE STORES AND SERVICES

For marine stores and services at Bush's Marina, Driftwood Cove, Starport Severn and Rawley Resort see "Marinas, Yacht Clubs and Moorings." The following are services not located at the marinas:

Barron's Custom Boats, a dryland facility about 1/4 mile from the lock, does all collision repairs (fibreglass and wood), as well as antique wooden-boat restoration. Emergency repairs are available seven days a week and they can arrange to have powerboats up to 44 feet trailered to the shop.

King's Propeller, a dryland facility 1/2 mile from the lock, is a mobile marine service that does welding, and repairs propellers and gas engines. King's will come to your boat if you

have engine trouble or your propeller meets a rock. Powerboats up to 30 feet can be hauled to the shop for repair or winter storage. 705-538-2859

Roosen Boat Tops, a dryland facility located between Port Severn and Honey Harbour, repairs canvas and boat tops. Staff are available 6 days a week to make emergency canvas repairs. Roosen has a small store that sells marine hardware and fittings and cleaning supplies as well as fittings, hardware and cleaners for boat tops. 705-756-8079

ESSENTIALS

Most of what the village has to offer is across the dam from the lock station and, at most, a brisk 20-minute walk from any of the marinas. The liquor/beer store is about 1/2 block from town. A coin laundry can be found on Lone Pine Road, about a mile north of the locks. The H&S Shell service station (and family-style fast-food restaurant), also on Lone Pine Road (the service road for Hwy. 400), refills propane tanks, but it is a 1 1/2-mile walk (or you can take your dinghy to their dock). The post office is in town. The nearest pharmacy is in Coldwater, about 9 miles south, and the nearest hospitals are in Midland (18 miles west) and Orillia (25 miles east). Only 911 medical assistance is available in Port Severn.

EATING OUT

Most places to eat are at marinas or resorts which also have docking:

The Grill (705-538-2378), located at Bush's Marina, has a large deck overlooking the dam and lock. The restaurant offers casual dining with a roadhouse style menu that includes items such as burgers and fries as well as steak. Complimentary docking while dining; takeout available. Plans include offering delivery to the boat (check at the time of your visit). Open for breakfast, lunch and dinner; licensed; no reservations.

Lighthouse 45 (705-538-2272; rawleyresort.com), the restaurant at Rawley Resort and Marina, has a waterside dining room with outdoor patio overlooking Little Lake and its beautiful sunset views. A large bar with a piano player for entertainment is a comfortable place to enjoy an afternoon or post-dinner cocktail. The restaurant offers casual fine dining with steaks and prime rib the specialty. You can walk over from the lock (it's about 10 minutes), call for a golf cart shuttle or take advantage of the complimentary docking offered while dining. Takeout available. Open for breakfast, lunch and dinner; licensed; reservations accepted.

The Galley (705-538-2502; driftwoodcove.com/dining), located at Driftwood Cove Marine Resort, has a screened-in porch and

patio overlooking the water. The café offers casual fare: burgers, sandwiches, wings, and salads. The restaurant also serves ice cream, milkshakes and home baked goods; be sure to try one of the pies made with real fruit filling.

Smaller boats (up to about 25 feet) can use the restaurant's dock-and-dine dock (no requirement to stay the night; larger boats can often be accommodated at the marina). Open for breakfast, lunch and dinner; takeout available; licensed; no reservations; 705-538-0334.

Coffee Cabin located at Severn Mills Trading Post, coffee, quality baking, delicious food, cold craft beers, refreshing cocktails, fun gifts and decor and sincere customer service. Treat yourself to something at the Cabin. 705-346-4772

THINGS TO DO

The tourist information centre is located on Lone Pine Road in Bressette House (about a mile from the locks and across from the coin laundry); it also has information for Honey Harbour if that is your next destination. Ask at the tourist information centre if you would like to go horseback riding (you'll have to take a taxi). Most people stop in Port Severn because they are on their way somewhere and there are not many things to do except enjoy the scenery.

Fishing is good in the area for walleye, pike, bass, crappie, salmon and trout. Try your luck with minnows or ask locals you see fishing for



www.portsbooks.com

advice. Fishing tackle and worms can be purchased at Bush's Marina and at Lock 45 store. Fishing guides are also available; check with the marinas for suggestions.

TRANSPORTATION

There is taxi service. For daily connections north to Sudbury and south to Toronto, Ontario Northland buses (800-461-8558; ontariounorthland.ca) stop at H&S Shell (705-538-2941), about 1 1/2 miles north of the lock and 1/4 mile from Driftwood Cove; you can also take your dinghy to the service station's dock.



Chamber of Commerce

Serving Georgian Bay, West Severn & East Tay Townships



In Touch Realty Inc., Brokerage

Bryan Coxworth, Broker

"Selling Southern Georgian Bay & Western Muskoka Since 2002"

705.790.7629

CottageLifeRealty.com
Bryan@CottageLifeRealty.com



A&A Services and Marine Contracting Ltd.

"Over 40 years experience serving Southern Georgian Bay"

705.756.2781

aandaservices.ca
reception@aandaservices.ca



Armin Grigaitis Broker of Record

"None of the pressure, & all of the experience you could want"



705-756-7629

armin@mrcottage.ca
www.mrcottage.ca



"The bitterness of poor quality lingers on, after the sweetness of low price is forgotten"

Visit our showroom at
2985 Mayhew St, Waubesaushene, ON.

705.538.0350

genovaceramictiles.wixsite.com



Heather & Michael Cory Broker | Sales Representative

"We remain Dedicated to our Fundamental Mission to Create The Best Personal Service in our Real Estate Marketplace"

705-345-1884

TheCottageShack.com
Michael@TheCottageShack.com



"Dishing Up All Life's Events"

Keep Calm and Lettuce Cater On
Corporate • Private • Weddings
Cottage • Yacht and more!

705-795-5661

cainscatering.ca
cainscatering@gmail.com

HONEY HARBOUR

CHARTS: 2241 (Port Severn to Christian Island)
2202 (Port Severn to Parry Sound; Sheet 1 – Port Severn to Tomahawk Island)

GPS:

WAYPOINT # _____ Off the S tip of Beausoleil Island, S of FIG buoy M13, on the Midland/
Penetang range (152 1/2'); 2 1/2 miles from Honey Harbour: 44°49.10'N;
79°52.50'W

WAYPOINT # _____ At mile 10 on the small-craft route, just off the flashing light on Turning Rock
at the south entrance to Honey Harbour: 44°50.89'N; 79°49.32'W



Chart 2202: In low-water years, the Coast Guard adds buoys on shoals and places white or yellow information buoys where depth is less than 6 feet

Located on the small-craft route that winds north from Severn Sound to Parry Sound, Honey Harbour got its name from the many references to bees and honey through the years. The Hurons called it the “island of wild bees and honey,” and the lumbermen who logged the area in the late 1800s noted large quantities of honey in the trees they cut down. After the lumbering era, boat building and tourism became the source of income for the hamlet. During the Second World War, two 112-foot wooden Fairmile sub chasers were built here.

Boat building has died out, but tourism is a booming business. The water is very busy on summer weekends, both with cottage boats – many of the cottages in the area do not have road access – and cruising boats, since Honey Harbour is a popular stopover before or after spending time among the islands of the Georgian Bay Islands National Park.

Honey Harbour offers cruisers a wide variety of places to stay, including first-class accommodation at resort-like marine facilities. There are also many marinas in the area that are geared primarily towards cottagers with relatively small powerboats.

GETTING THERE

The small-craft route to Honey Harbour leads through shoal water where a careful watch and count of buoys is required. There's no room to make a mistake, and it is essential to have detailed Strip Chart 2202 to navigate the area. Do not rely only on a chart plotter. Note that the main shipping channel buoyage requires you to leave red marks to starboard while heading south, while the small-craft channel is considered upstream heading north and requires you to leave red marks to starboard heading

Emergency 911
Coast Guard Search and Rescue 800-267-7270
..... (*16 cell)
Ontario Provincial Police
(non-emergency) 888-310-1122

Marinas and Yacht Clubs

(web addresses in listings)

Bayview Marine Resort 705-756-2482
Brandy's Cove Yachting Centre 705-756-9900
CnC Marina and Construction 705-756-3231
Delawana Resort .705-910-1369 ,888-557-0980
Georgian Bay Landing..... 705-756-2495
Honey Harbour Boat Club Marina 705-756-2411
Honey Harbour Small Motors &
Marina 705-756-2151
Nautilus Marina..... 705-756-5534
Paragon Marina 705-756-2402
Picnic Island Resort..... 705-756-2421
..... 855-742-6420
South Bay Cove Yacht Haven 705-756-3333
South Harbour Marina..... 705-756-2473
Village Marina..... 705-756-2706

Marine Services

(web addresses in listings)

Hewitt Marine Services 705-756-2785
Honey Harbour Towne Centre 705-756-2472
Jim Langley Marine 705-756-1662
Mike's Marine Service 705-756-2473
Purser Marine Services 705-756-9090
Scobie Yacht Service 705-528-7358

Local Information

Georgian Bay Islands
National Park705-526-9804 (Midland)
..... 705-538-0559 (weekends)
..... pc.gc.ca
Honey Harbour Park
Landing gbtownship.ca (click on boating,
..... click on launch icon at Honey Harbour)
Honey Harbour Public Library 705-756-8851
..... olsn.ca/georgianbaypl
Muskoka Tourism..... (705) 689-0660
..... 800-267-9700
..... discovermuskoka.ca
Southeast Georgian Bay
Chamber of Commerce..... 705-756-4863
..... (Port Severn)
..... segbay.ca

north. Follow the chart carefully and keep track of all buoys. In low-water years, the Coast Guard warns of shoal water by placing white and sometimes also yellow low-water information buoys wherever the water is less than 6 feet and adds buoys to mark shoals where necessary on the small-craft route. These changes are reported in Notices to Mariners. You will also

USING FLARES

These mandatory onboard safety devices are essential for everyone's safety in the event of an emergency.

There are four types of flares approved by Transport Canada, categorized by the letters A, B, C and D. While some are handheld or thrown into the water, others are fired into the sky.

Not only are flares a mandatory safety device for your boat, but everybody onboard should know how to use one in the event of an emergency. As tempting as it may be to re-enact the infamous scene from *James Bond: From Russia with Love*, flares should never be treated with a cavalier attitude. If you're found doing so, prepare to pay a hefty fine.

There are four types of flares approved by Transport Canada, categorized by the letters A, B, C and D. Some are handheld or thrown into the water, while others are fired into the sky. Regardless of which type you keep on board, make sure you're familiar with the steps for firing them, as the procedure varies from one manufacturer to the next.

TYPE A

Fired through a cylinder tube, Type A flares produce a distinctly red star and deploy a parachute to slow its descent. It can reach a maximum height of approximately 300 meters (1,000 feet) and burns for 40 seconds at 30,000 candlepower. Type A flares are known as Safety of Life at Sea (SOLAS) signal rockets. SOLAS is an international treaty designed to protect the safety of merchant ships, so the standards requirements for safety are higher than those of Transport Canada's for pleasure craft boats. All vessels should carry SOLAS-approved flares.

TYPE B

The Type B sky-blazer flare is a multi-star red aerial flare. There are two styles, the handheld cylinder and 12-gauge launching pistol. Both fire two red signals up to 100 metres (300 feet) high at a brightness level of 15,000 candlepower and burn for four to five seconds. They are also waterproof and conveniently float.

TYPE C

While quite visible at night, type C flares are clearly visible in daylight as well, due to the abundance of smoke they produce. Type C flares are ideal to use in a secondary role to aerial flares. There are three types of firing mechanisms within the C class. Type 1 burns for three minutes and has a candlepower of 700. Type 2 and 3 are SOLAS-approved, have a burn time of one minute and a brightness rating of 15,000 candlepower.

TYPE D

Type D flares are available in two versions – a SOLAS water emersion flare and handheld flare, similar to the type C type one flare. The SOLAS model comes in a can, which is thrown, downwind into the water after activation, burning for three minutes. The handheld version burns for one minute. Both styles create a distinctive orange cloud of smoke that is visible for up to eight kilometres or 4.5 nautical miles in daylight.

AERIAL FLARES

Using aerial flares requires three basic steps as follows:

1. Aim the flare above eye level and into the wind at a 45- to 90-degree angle with the flare's arrow directed upwards.
2. Turn your face away from the flare when firing.
3. Once a search and rescue team craft has spotted your flare, wait ten seconds then fire a second one to accurately determine your position. Most aerial flares are visible up to 50 kilometres or 27 nautical miles. It should be fired in an open area where there's no risk of inflicting damage.

HANDHELD FLARES

Tips for using handheld flares include: 1. Always hold a lit handheld flare over the side of your boat downwind – you don't want hot ash particles landing on anything flammable inside your boat or to inhale all the smoke generated by the flare. 2. Never wave this type of flare above your head – your hair is flammable too! Handheld flares are built for signaling rescue craft within closer range.

For additional information you may find the Canadian Power and Sail Squadrons' distress signaling instructional video very helpful (www.cps-ecp.ca).

Photo courtesy of the Canadian Power Squadron





Chart 2202: Be careful navigating Big Dog Channel — it's a narrow passage with plenty of rocks

notice that Chart 2202 has different scales — the Severn Sound part of the chart is a smaller scale than the larger scale used to detail the small-craft route.

To get to Honey Harbour from the main shipping channel (Chart 2241), proceed past the mouth of Penetang Harbour on a 152 1/2° bearing past the southern tip of Beausoleil Island. Leaving the green can M13 (FIG) to port, head northeast into the small-craft channel between Beausoleil Point and Present Island. Pass the mid-channel buoy (red and white) about 3/4 mile south of the western tip of Roberts Island (there is a diversion here to the north, for those who wish to take the channel up towards Beausoleil Bay). Just south of the eastern tip of Roberts Island, head between the channel buoys and around the flashing white light (on a 19-foot tower with white slat-work) on Turning Rock. From there, the buoyed chan-

nel leads to Honey Harbour, about a mile north.

The village of Honey Harbour and its marinas stretch from south of Picnic Island, around Royal Island and into Honey Harbour proper, an inlet running east off the main channel. When navigating in this area do not be side-tracked by the cottagers and workboats that weave in and out among the islands following their own alternate routes.

YACHT CLUBS, MARINAS AND MOORINGS

(Since the Honey Harbour cottage area is largely inaccessible by car, there are many marinas and construction companies that have docks for their equipment and/or for small cottage boats but offer no transient dockage or other services for boaters. Therefore, they have not been included below.)

Brandy's Cove Yachting Centre (705-756-9900; brandyscove.com) is on the south side of Brandy's Island, east of the junction of the channels from Honey Harbour, Waubauskene and Midland. A channel marked with red and green buoys leads into the marina, green floating house and sign, which can be seen from red marker C78 (in Honey Harbour Channel). The marina has 10 to 15 feet of water in its entrance channel and 6 to 8 feet in the transient slips. Brandy's Cove monitors VHF 68, and visitors are asked to call ahead or go to the boat-house for directions. There are 120 slips, most are new floating docks since 2014, including 14 new 45' slips, with 30-amp and 50-amp power and new dockside pump-out. The marina has room for about 5 transients (maximum length, 55 feet; maximum draft about 5 feet). Most slips are very protected with excellent views. The marina can haul boats up to 25 tons, offers winter storage, full-service mechanical, diesel, electronics, fibreglass and canvas repair. The marina has a large chandlery on site. There is a large green space with a barbecue and picnic area on the property.

Facilities: pumpout; 30-amp power and water at each slip; washrooms, showers, ice, WIFI, public telephone, picnic tables, beach, barbecues, launch ramp.

CnC Marina and Construction (705-756-3231) is located off the main channel on the eastern shore, on the south side of the Bayview Park peninsula. The marina can be recognized by the large silver building (no signs on the water) and has docks for 30 seasonal boats. CnC caters primarily to cottage boats; transient dockage in 5 feet of water is available for about 5 boats (maximum length, 26 feet). Guests are asked to telephone ahead (no VHF). Haulout by trailer for powerboats up to 26 feet, winter storage, car and trailer parking (which is popular

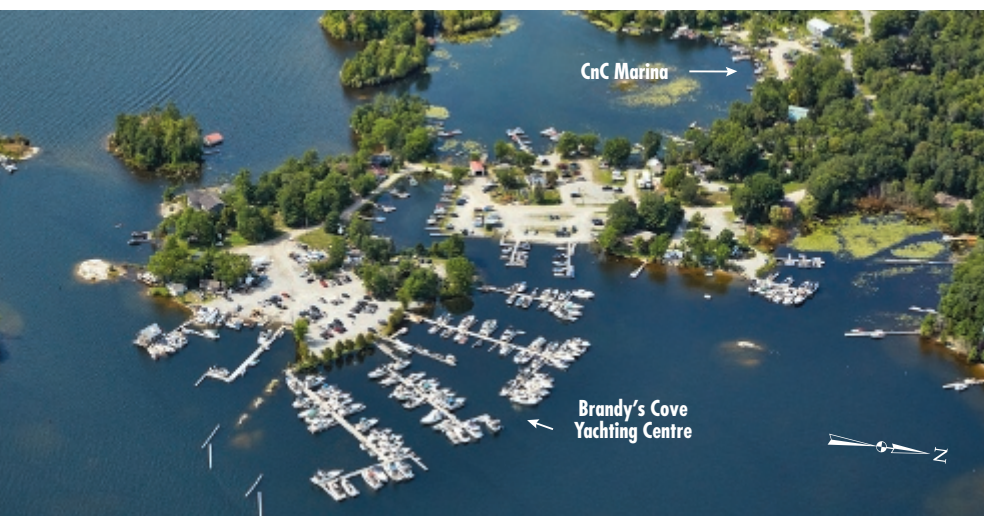


Chart 2202: Brandy's Island Marina is east of the junction of the channels from Honey Harbour, Waubauskene and Midland



Chart 2241: Day-use dockage is available for boaters who wish to stop at Picnic Island Resort.

with those launching trailerable boats), water-taxi service and all types of engine, electrical, canvas and propeller repair are available.

Facilities: launch ramp.

Bayview Marine Resort (705-756-2482; bayviewmarine.ca) is located off the main channel on the eastern shore just south of Picnic Island (on the north side of the Bayview Park peninsula) and flies the Ontario Marina Operators Association flag. The entrance channel is 8 feet deep, and the gas dock and slip area have 5 to 6 feet of water. The marina has 120 seasonal boats and can accommodate 10 to 12 transients (maximum length, 36 feet; maximum draft, 4 1/2 feet). Bayview Marine monitors VHF 68 and visitors are asked to call ahead. Available on site are hull, engine, propeller, canvas and electrical repair. The marina offers winter storage and has a 12-ton hydraulic trailer that can haul out powerboats to 36 feet and sailboats to 30 feet. A small marine store, catering mainly to powerboats, carries charts, marine hardware, some nautical clothing, rope, cleaning supplies, engine parts, electronics, fishing tackle, and snacks. 705-756-2482; bayview-marine.ca

Facilities: gas, pumpout; 20-amp power and water at some slips; washrooms, showers, ice, public telephone, fax service, picnic tables, beach, children's play area, launch ramp.

ESCAPE - EXPERIENCE - ENJOY



Living the boater's lifestyle does not stop when members and guests dock at Starport Severn. Rather, Starport continues the experience on-site by providing luxury resort-style services and amenities including:

Monitor VHF Channel 68
Popular Trent Severn Chandlery store
Guest slips available
Immaculate washroom & shower facilities
Laundry facilities
Boater's lounge with satellite TV
Weekend newspaper delivery to slip
Complimentary WiFi at slips
Children's playground
30 & 50 amp power available
35 tonne marine travel lift
Certified technicians: Mercury & Volvo
Parts & Service department
Fiber glass repair shop
Gated storage for all recreational sports

STARPORT SEVERN

Upper:
2658 Kellys Road, Port Severn, ON L0K 1S0
Lower: 1
2754 Marine Drive, Port Severn, ON L0K 1S0
P: 705.538.2975 **E:** info@starportmarina.com

GENERAL INQUIRIES

P: 1.855.STARPORT (7827767)
W: www.starportmarina.com



ESCAPE FROM THE ORDINARY