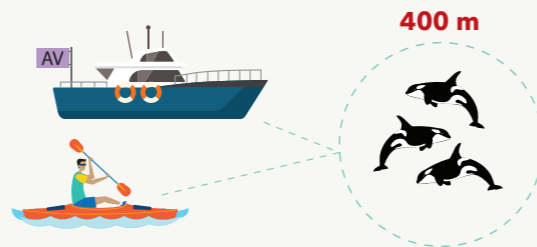


KEEP 400 m AWAY FROM ALL KILLER WHALES

IT'S THE LAW

Exceptions apply for authorized vessels with a purple authorized vessel (AV) flag. Do not follow them.



DO NOT ENTER INTERIM SANCTUARY ZONES (ISZ)

IT'S THE LAW

Penalties for violations may apply.

Human-powered vessels may transit directly through a 20 m corridor along the shoreline of the Pender and Saturna Island ISZs.

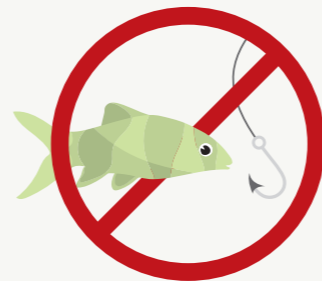
*See reverse for list of exceptions



NO FISHING

IT'S THE LAW

Area-based fishery closures in the Juan de Fuca Strait and Southern Gulf Islands for recreational and commercial salmon fisheries in effect August 1–October 31.



BE WHALE WISE

Stop fishing when within 1,000 m of killer whales.

Reduce speed to less than 7 knots when within 1,000 m of the nearest marine mammal.

When safe to do so, turn off fish finders and echo sounders.

Place engine in neutral and allow animals to pass if you find yourself within 400 m of a killer whale.



HELP PROTECT KILLER WHALES

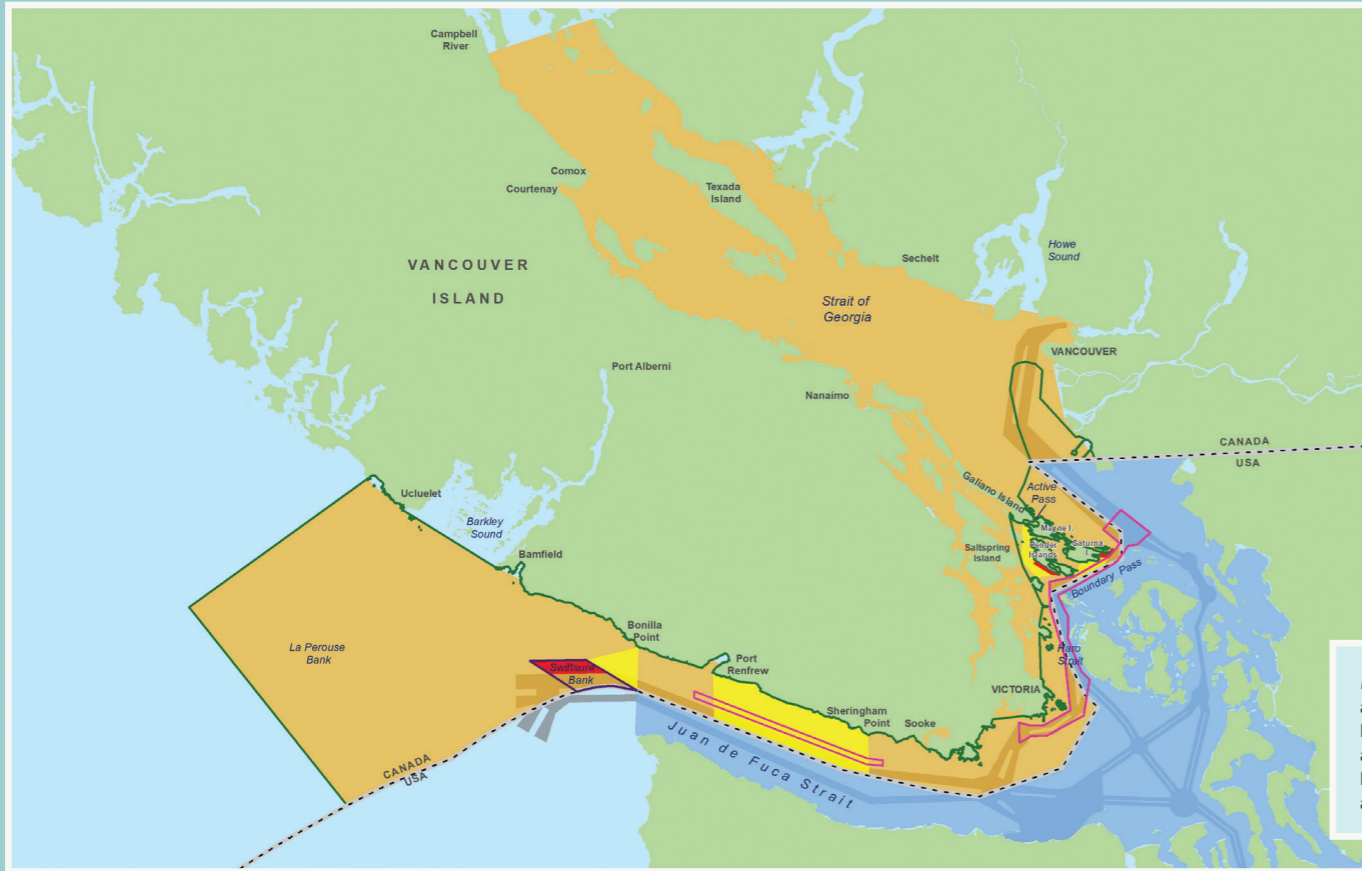
KNOW BEFORE YOU GO

Canadian laws and guidelines for boating, fishing, and paddling around killer whales



Photo credit: DFO

MAP OF SOUTH COAST OF VANCOUVER ISLAND, BRITISH COLUMBIA



Marine Mammal Regulations apply year-round in Canadian Pacific waters. Keep 200 m away from all killer whales in BC, outside designated 400 m approach areas.

CHECK OUT SOME ADDITIONAL RESOURCES



For more information on the suite of 2020 management measures:
www.pac.dfo-mpo.gc.ca/whales-baleines/srkw-measures-mesures-ers-eng.html



For information on the Minister of Transport's Interim Order:
www.tc.gc.ca/eng/mediaroom/interim-order-protection-killer-whales-waters-southern-british-columbia.html



For more information on Vancouver Fraser Port Authority's ECHO program:
www.portvancouver.com/echo



For the best ways to help whales while on the water or boating in U.S. waters please visit:
www.bewhalewise.org

Stay 400 m away from killer whales in all southern BC coastal waters between Campbell River and just north of Ucluelet. In effect June 1.

Vessels with a purple authorized vessel (AV) flag are authorized to be closer to non-Southern Resident killer whales. Do not follow them.

Do not enter Interim Sanctuary Zones (ISZ) from June 1 to November 30. No boating, no fishing.

Some exceptions apply including:

- vessels accessing local residences and establishments
- vessels in distress or providing assistance to a vessel or person in distress
- vessels avoiding immediate or unforeseen danger
- Indigenous peoples exercising existing rights

Area-based **fishery closures** in the Juan de Fuca Strait and Southern Gulf Islands for recreational and commercial salmon fisheries in effect August 1–October 31.

ECHO Program large commercial vessel measures

Potential effective date June 1–October 31, based on whale presence:

- 1. Haro Strait and Boundary Pass voluntary vessel slowdown**
Large commercial vessel slow down: 11.5kn (bulkiers, tankers, general cargo) or 14.5kn (containers, car carriers, cruise).
- 2. Strait of Juan de Fuca voluntary inshore lateral displacement**
Inshore vessels (tugs) move further away from shore into lateral displacement zone.

Shipping lanes

Critical Habitat

Report any violations or incidents involving marine mammals (that you observed or were involved in) to Fisheries and Oceans Canada's 24/7 Observe, Record, Report line:



1-800-465-4336



DFO.ORR-ONS.MPO@dfo-mpo.gc.ca