

BOATING AROUND KILLER WHALES – 2020

Map of South Coast of Vancouver Island, British Columbia

Stay 400 m away from killer whales in all southern BC coastal waters between Campbell River and just north of Ucluelet. In effect June 1.

Vessels with a purple authorized vessel (AV) flag are authorized to be closer to non-Southern Resident killer whales. Do not follow them.

It's the law.

Do not enter Interim Sanctuary Zones (ISZ).

June 1–November 30.

Penalties for violations may apply.

Some exceptions apply, including:

- Vessels accessing local **residences or establishments**; vessels in distress or providing assistance to a vessel or person in distress; vessels avoiding immediate or unforeseen danger and; Indigenous peoples exercising existing rights.
- Human-powered vessels may transit directly through a 20 m corridor along the shoreline of the Pender and Saturna Island ISZs.

It's the law.

Area-based **fishery closures** in the Juan de Fuca Strait and Southern Gulf Islands for recreational and commercial salmon fisheries in effect August 1–October 31.

It's the law.

ECHO Program large commercial vessel measures.

Potential effective date June 1–October 31, based on whale presence:

1. **Haro Strait and Boundary Pass voluntary vessel slowdown**
Large commercial vessel slow down: 11.5kn (bulkers, tankers, general cargo) or 14.5kn (containers, car carriers, cruise).
2. **Strait of Juan de Fuca voluntary inshore lateral displacement**
Inshore vessels (tugs) move further away from shore into lateral displacement zone.

Be Whale Wise

Stop fishing when within 1,000 m of killer whales.

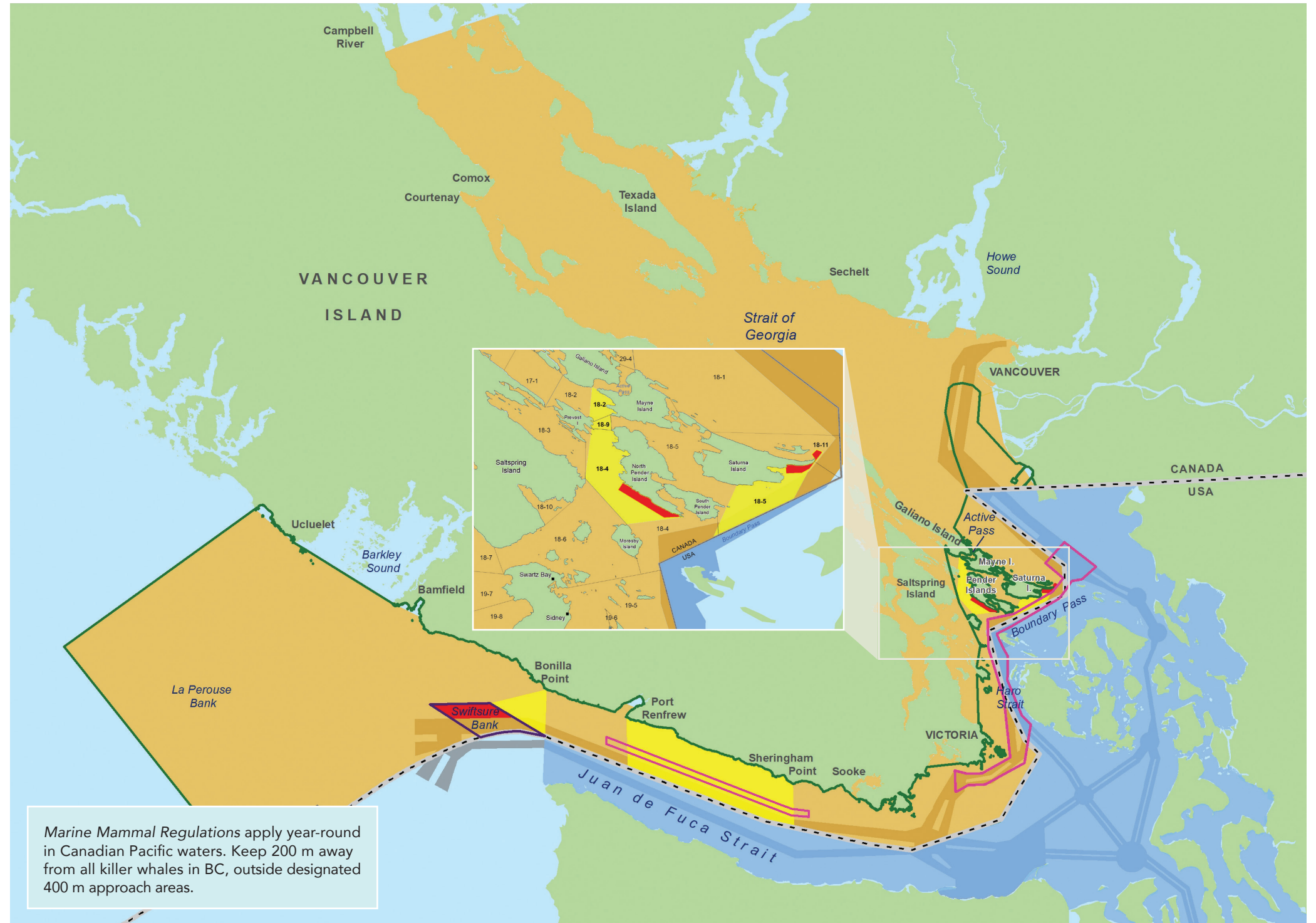
Reduce speed to less than 7kn when within 1,000 m of the nearest marine mammal.

When safe to do so, turn off fish finders and echo sounders.

Place engine in neutral and allow animals to pass if you find yourself within 400 m of a killer whale.

Shipping lanes

Critical Habitat



Report violations to Fisheries and Oceans Canada Observe, Record, Report line at:

1-800-465-4336

DFO.ORR-ONS.MPO@dfo-mpo.gc.ca



Be Whale Wise:
bewhalewise.org



For more information on the suite of 2020 management measures: www.pac.dfo-mpo.gc.ca/whales-baleines/srkw-measures-mesures-ers-eng.html



For more information on the Minister of Transport's Interim Order: www.tc.gc.ca/eng/mediaroom/interim-order-protection-killer-whales-waters-southern-british-columbia.html



ECHO program:
www.portvancouver.com/echo